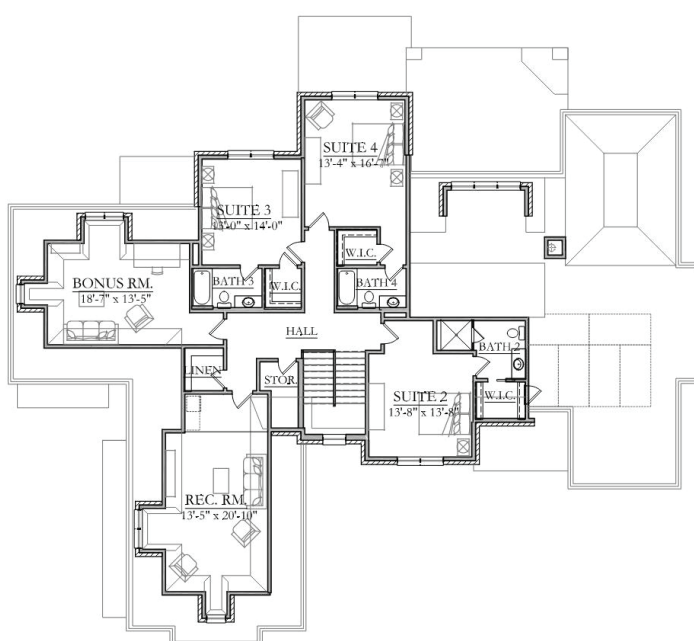
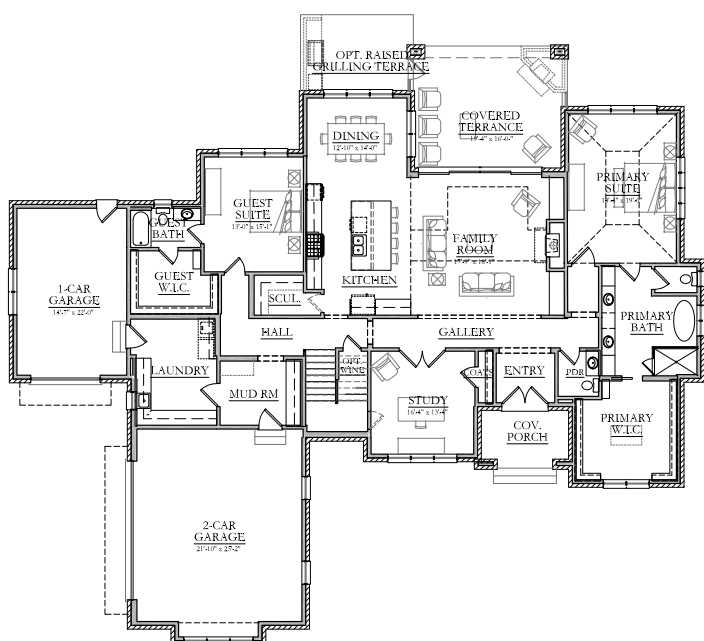


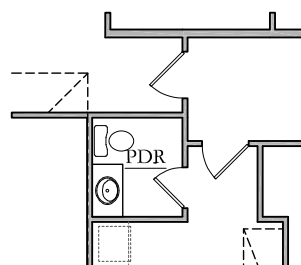
The Manchester

Property Features

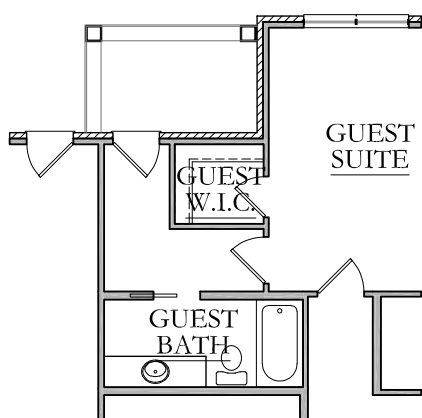
- 5010 Sq. Ft.
- 5 Beds
- 5.5 Baths
- Primary Suite on Main Level
- Guest Suite on Main Level
- Open Kitchen Design
- Covered Terrace with Opt. Raised Grilling Terrace
- 3-Car Garage
- Scullery
- Bonus Room and Rec. Room on Upper Level



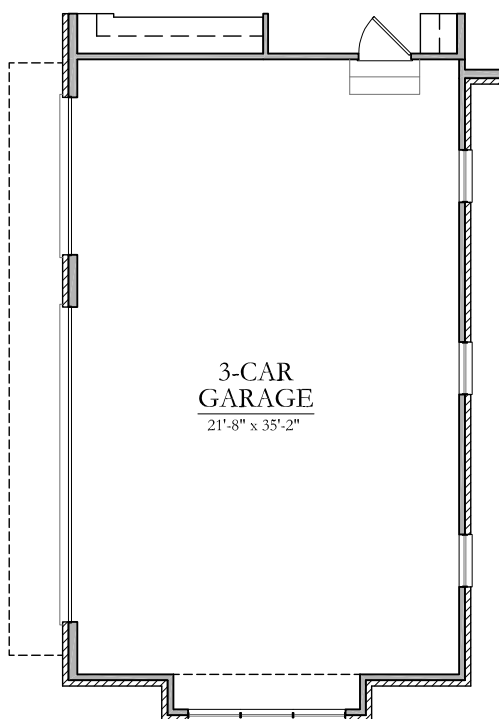
The Manchester



POWDER RM
ILO STORAGE



OPTIONAL
REAR ENTRY



3-CAR GARAGE
ILO 2-CAR GARAGE