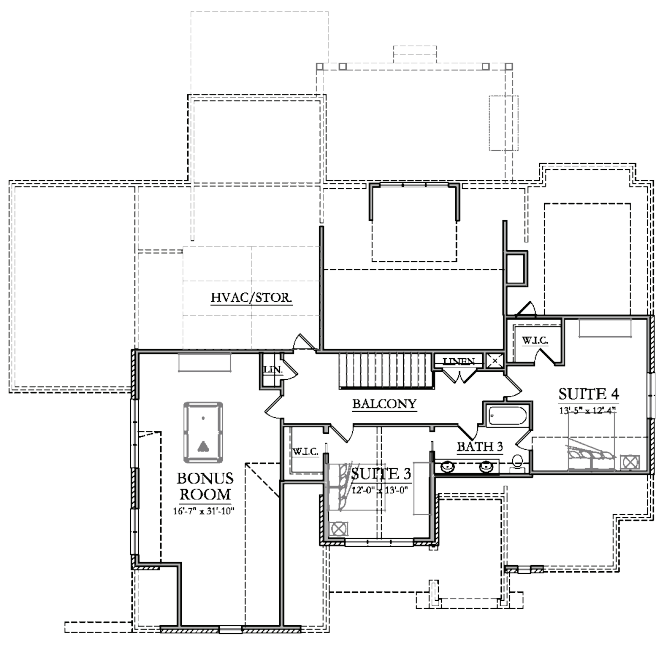
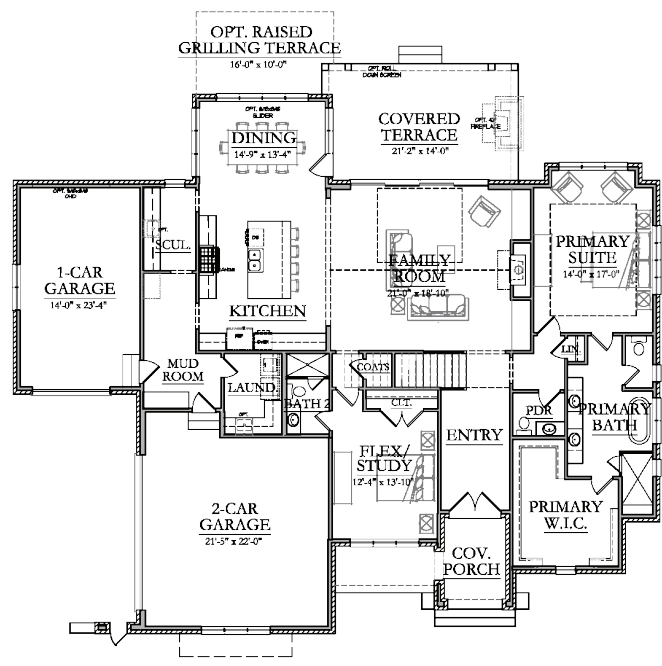




# The Eastover B

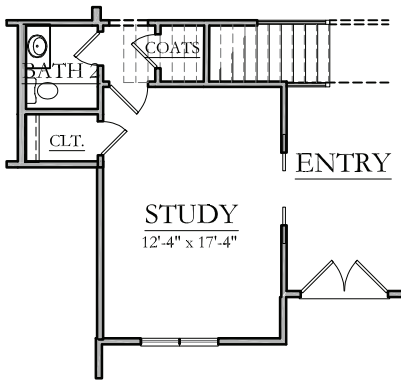
## Property Features

- 3850 Sq. Ft.
- 4 Beds
- 3.5 Baths
- Primary Suite Main Level
- Opt. Guest Suite on Main Level
- Scullery
- Covered Terrace with Opt. Fireplace
- Open Kitchen Design
- Opt. Raised Grilling Terrace
- 3-Car Garage
- Bonus Room on Upper Level

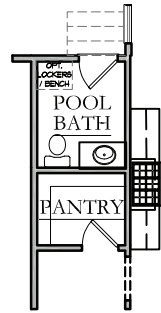


Plans, renderings, and elevations are visual representations only and may not reflect the actual home. Stated dimensions are approximate and should not be used as representation of the home's actual size or net useable square footage. We reserve the right to make changes to floor plans, specifications, dimensions, and materials without prior notice. Illustrations are artist renderings only.

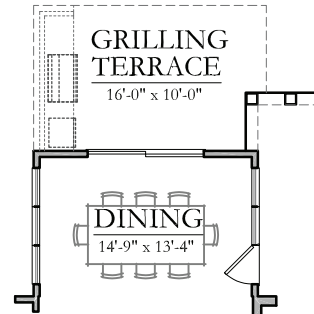
# The Eastover B



OPT. STUDY

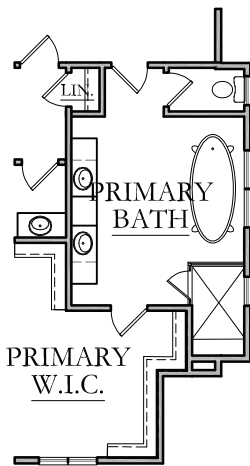


OPT. BATH



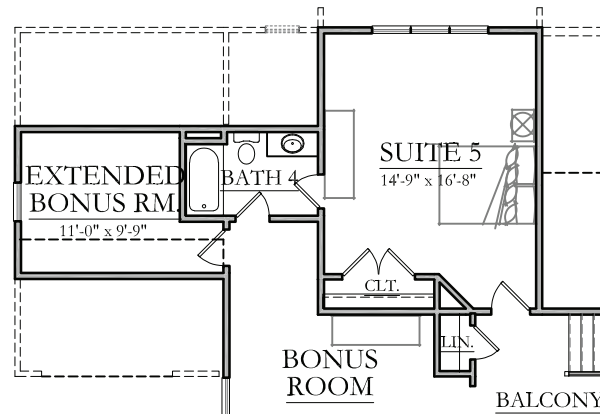
OPT. GRILLING TERRACE

150 SQ. FT.



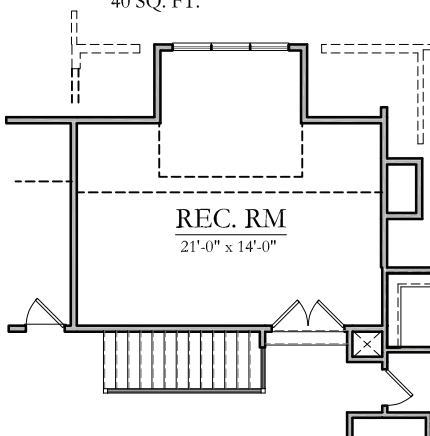
OPT. EXTENDED BATH

40 SQ. FT.



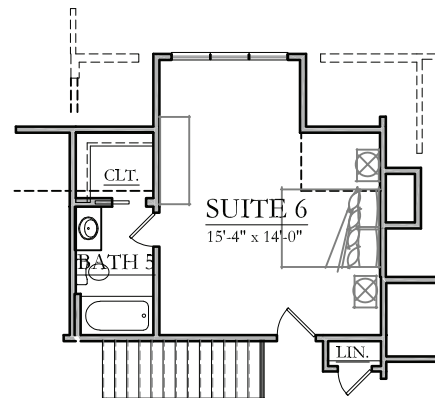
OPT. SUITE 5 W/  
EXTENDED BONUS

550 SQ. FT.



OPT. REC. RM.

370 SQ. FT.



OPT. SUITE 6  
W/ BATH 6

370 SQ. FT.