

let us build a masterpiece for you.

# RIVER RUN at Davidson



**17532 Gillican Overlook  
Davidson, NC 28036**

## Homesite 109

**4110 Heated Square Feet  
5603 Under Roof**

Painted Brick Home with Stone Accents

2 Story Foyer

5 Beds, 4 Baths, Master & Guest Suite Down

3 Additional Private Suites Upstairs

Bonus and Game Room with Barn Doors  
and Wet Bar

Covered Rear Porch

**MOVE-IN LATE SUMMER**

**\$869,900**

### HIGHLIGHTS:

Energy Star Certified

10 Year Transferrable Structural Warranty

Granite Countertops Throughout

High End Woodworking in Entire Home

Extra Details Include Extensive Paneling,  
Trey Ceilings, Butler's Pantry,  
and so much more.



7300 Carmel Executive Park Drive, Suite 125  
Charlotte, NC 28226  
Billy@LinnaneHomes.com | 704 400 9147

**L**  
**LINNANE**  
**HOMES**

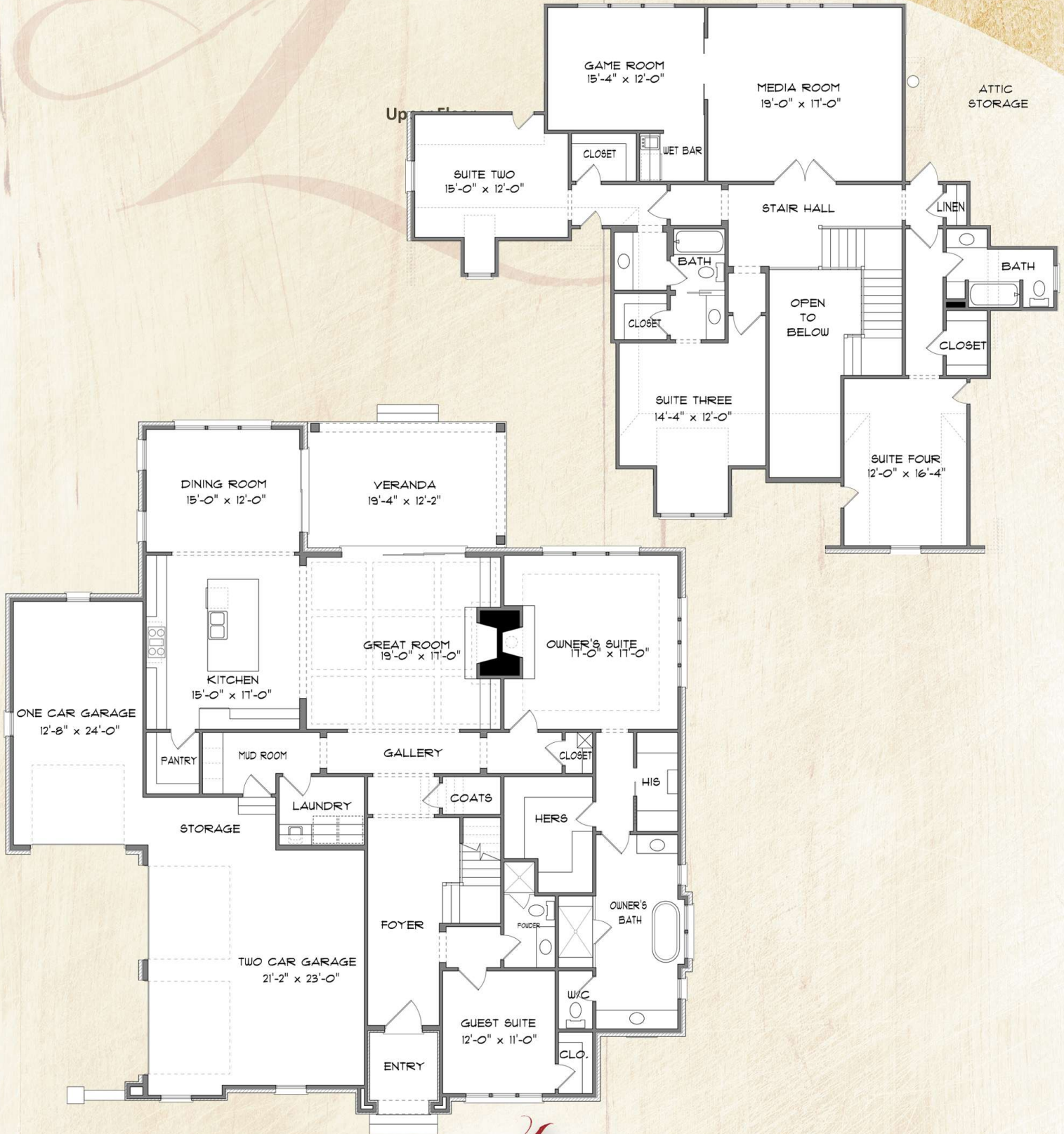
WWW.LINNANEHOMES.COM

Contact the River Run Sales Team  
for more information  
704 892 9898  
RiverRunD@Aol.com





let us build a masterpiece for you.



  
LINNANE  
HOMES

WWW.LINNANEHOMES.COM

This form utilizes artistic renderings of both floor plan and elevation. Actual floor plan and elevation may differ from this form.